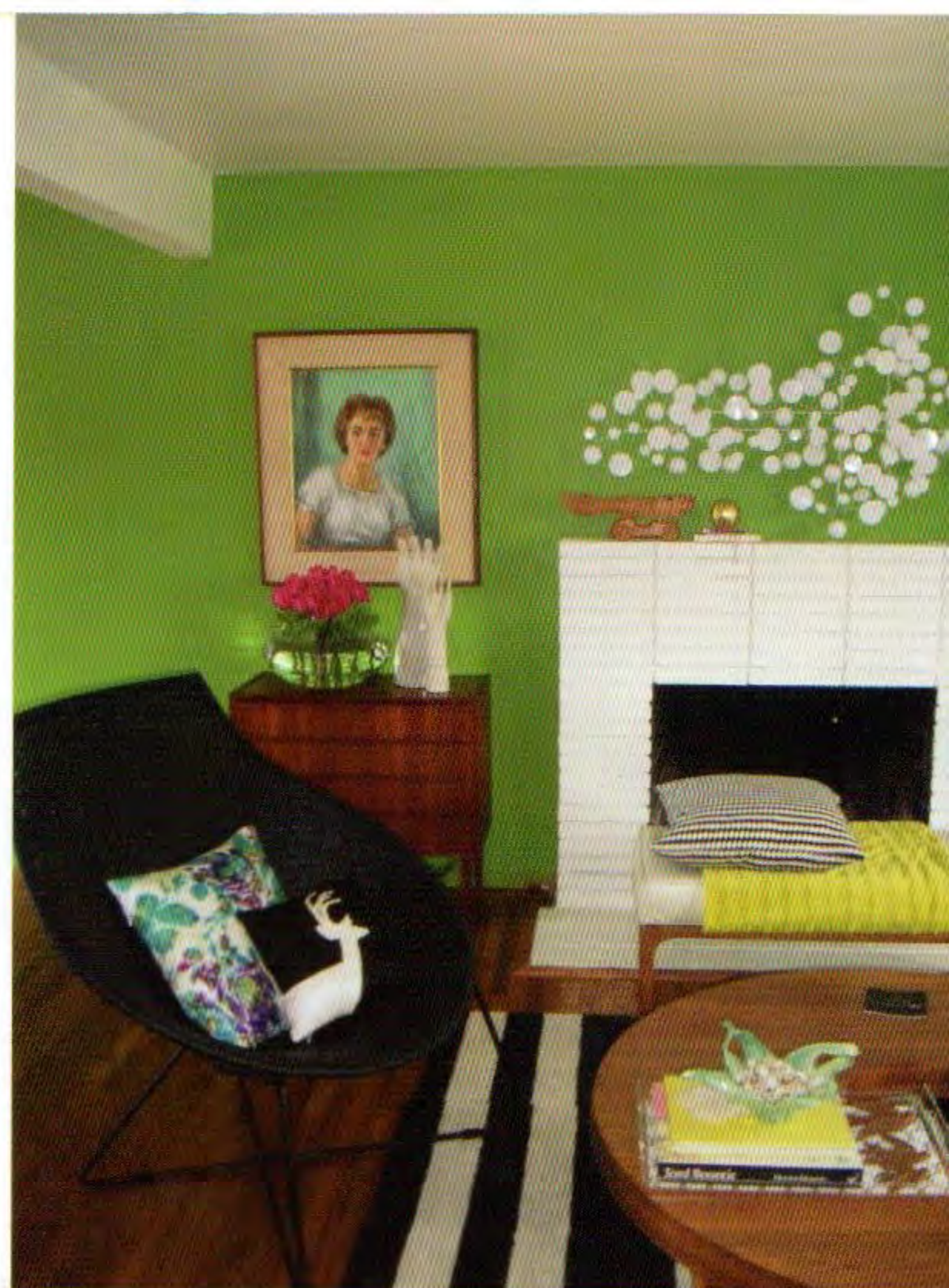
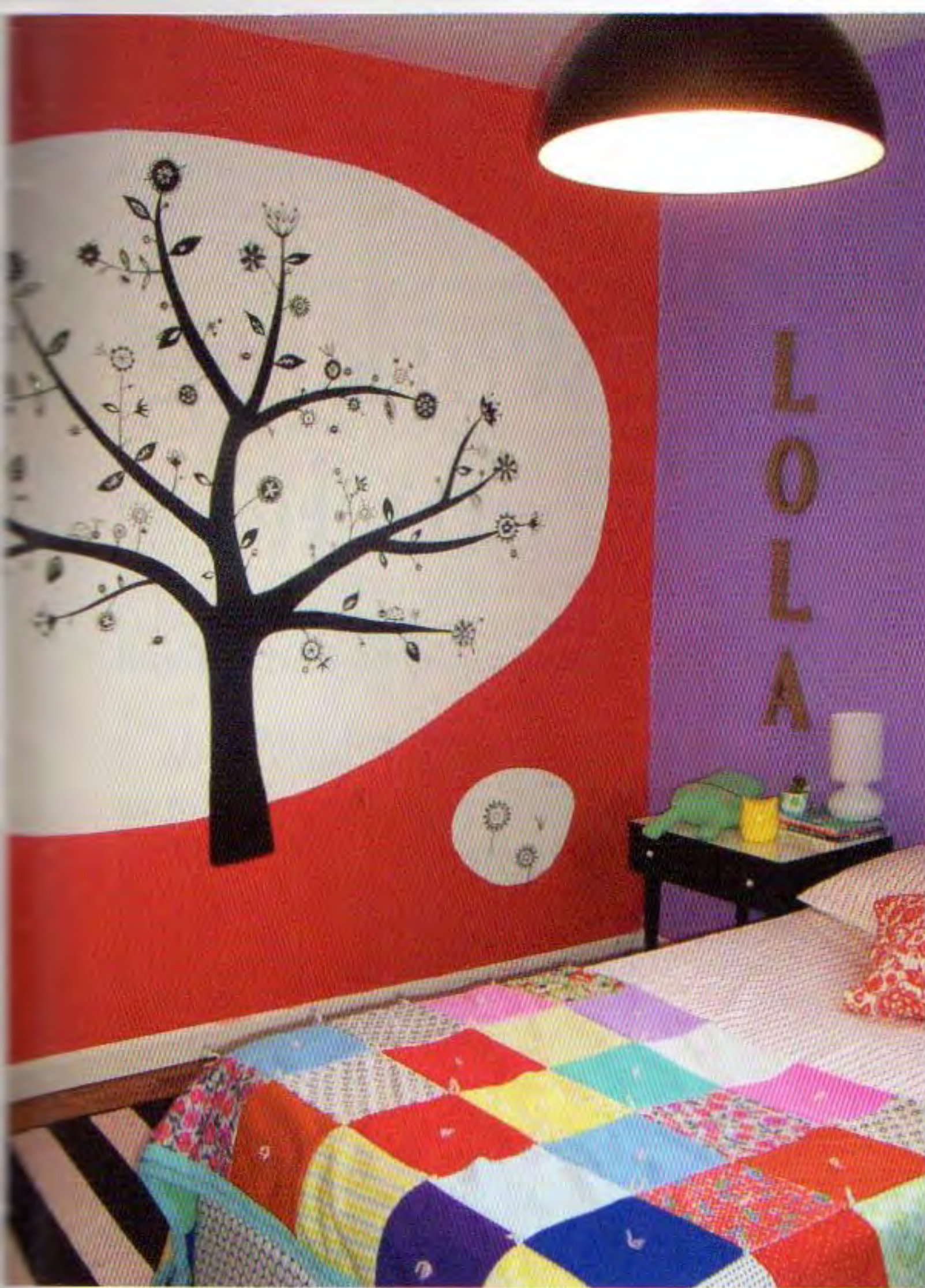




Photography by Heather Kennedy

# Anna's Wonderful World of Color

Raspberry, lemon, tangerine and lime leap from the fruit bin and splash across walls in Anna Stahl's home. Stahl, a young local decorator known for her bright vivid palettes, runs Nest Interior, a decorating service for children's rooms.



The daughter of two New York artists, Stahl was an art student when she made the leap to decorating. Stints decorating with the New York City Opera, Bergdorf Goodman and then Gump's in San Francisco helped Stahl hone her flair for high impact visual elements.

Stahl and her husband purchased a home along the Walnut Creek Pleasant Hill border and started a family. That's when Stahl noticed a gap in the marketplace when it came to kids' rooms and began Nest. Now she is in the process of taking her wizardry with color to decorating for the whole house. "It's only paint," Stahl says with a laugh. "Why not experiment and try a fresh new look? It can give you and your whole family an amazing emotional boost."

**Style Inspirations:** "I look through European home décor magazines. They are always way ahead on new styles and ideas. One of my favorites is Marie Claire Maison. I also look at fabric. Often a piece of fabric will get me going in a whole new direction."

**Favorite Sources:** "I love Ikea. And I zoom to Target when they feature home accessories by top designers. Four years ago I scooped all their Isaac Mizrahi. Right now the Dwell Studio line is attractive. I've found Kate Spade towels and Calvin Klein pillows at the Home

Goods store in Brentwood. I like West Elm and Crate & Barrel. Entrez-Open House, a store I love on Telegraph, just opened a branch right here in downtown Walnut Creek. I'm thrilled."

**Paint Tips:** "I am obsessive about paint chips. And the test sizes you can try on your walls. You get to live with it. So much depends on the space and natural light in your home. If it's screaming at you, you can tone it down. Most people don't know that a paint store can create a color for you halfway between two shades on a paint chip. Sometimes a color is too pale but the next level up is too dark. I like the palette at Benjamin Moore best."

**Color and Style Trends:** "Black is back. It's used as an accent wall or way to define space. White, too. A white accent wall is a great way to offset bright colored walls and keep the effect from being overwhelming. But it's a creamy white, not a stark white. Pink mixed with mineral-shaded browns and grays is very popular. I'm using a lot of warmer grays. Grass green and acid yellow are still in the mix. There's a resurgence of blues – indigo blue and French blue. Also texture-based neutrals and a cleaned-up version of country with modernized calico prints, quilt patterns and faux cowhide is a coming trend."